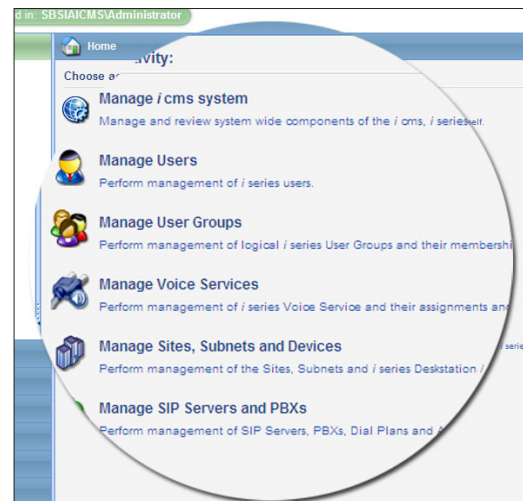


# *i*series Cost Effective Trader Voice Solutions

## *i*cms - Centralized Management System

### Features Include

- Global Administrative Access to *i* series Networks via a Convenient Web Interface
- Visual Representation of *i* series Devices and Voice Network Services
- Central Management of Private Lines, Hoot Circuits, *i* series Devices and Gateways
- Logical Grouping of End Users and Trading Markets
- Automated Update of *i* series Devices
- Compatibility with Microsoft® Active Directory and Windows Authentication Security
- Permission Access Control via User Groups, Geography or Voice Services



*i* cms - web interface

### Overview

The *i* series is a suite of Voice over Internet Protocol (VoIP) solutions that increases the resilience, flexibility and power of trading room voice solutions, by offering a “Plug and Trade” approach to trader voice technology. Based on dedicated network hardware and Speakerbus’ Real Time Protocol (SbRTP) packet technology, the *i* series product family maintains traditional voice quality and scalability standards while offering an evolutionary migration to a pure VoIP environment.

Speakerbus’ *i* Centralized Management System (*i* cms) is an intuitive web based administration tool used to simplify the process of configuring and deploying *i* series devices within a voice-ready data network. *i* cms offers a visual representation of *i* series devices allowing system administrators to set up and configure new and existing *i* series profiles. End users may be

logically grouped by trading speciality or geography. You can define and manage user and device preferences like personal directories, key page layouts, network settings, feature keys and firmware updates.

Speakerbus’ *i* Centralized Management System offers simplified global asset management, preventative maintenance, voice network services reporting and embedded security.



## Scalability

- One to thousands of devices globally

## Administration Functionality

- Set up and configure new and existing *i* series profiles<sup>1</sup>
- Define and manage user preferences like profiles, key page layouts and personal directory
- Define and manage device preferences like network settings, feature keys and firmware updates
- Preventative maintenance through analysis of network statistics pre-empting interruption service
- Visual representation of *i* series devices and Voice Network Services
- Reporting via 3<sup>rd</sup> party packages like Crystal reports or export data via CSV

## Devices Supported

- *i* turret - Trading Turret (iD808)
- Speaker Expansion Module - (iE801)
- 16 Key Expansion Module - (iE816)
- Four Channel Hoot Desk Station<sup>1</sup> (iD114)
- Single Channel Hoot Desk Station<sup>1</sup> (iD101)
- Monitor Speaker (iD100)
- IP Gateway<sup>1</sup> (iG124)
- Analog 4-Wire Hoot Gateway<sup>1</sup> (iG114)
- Analog 2/4-Wire Hoot & Private Line Gateway<sup>1</sup> (iG214)

## Network Utilization

- Dynamic or static IP addressing
- *i* cms communication protocol contained in TCP/IP
- Support for Microsoft® Dynamic Domain Name System (DNS)

## Security

- Choice of secure logon methods via Windows authentication or *i* cms' own embedded secure logon
- Integration into Microsoft® Active Directory

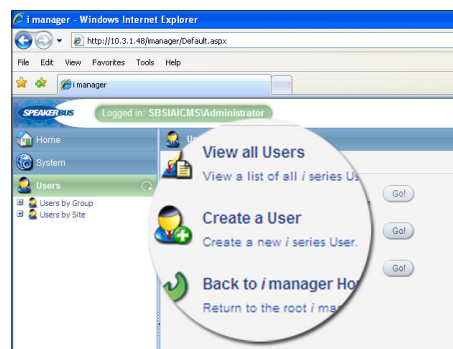
## *i* cms Server Requirements<sup>2</sup>

- Intel Pentium 4 Processor
- Minimum 1GB RAM
- Operating System
  - Microsoft® Windows 2003 Server 32 bit Standard/Enterprise<sup>3</sup>
  - Microsoft® Windows 2008R2 Windows 7 Server 64 bit Standard/Enterprise<sup>3</sup>
- SQL Supported Versions
  - Microsoft® SQL 2005 Server 32 bit Express/Workgroup/Standard and Enterprise<sup>3</sup>
  - Microsoft® SQL 2008 Server 32 bit Express/Workgroup/Standard and Enterprise<sup>3</sup>
  - Microsoft® SQL 2008 Server 64 bit Express/Workgroup/Standard and Enterprise<sup>3</sup>
- Minimum Disk 120 GB
- SVGA 1024 x 768 Display

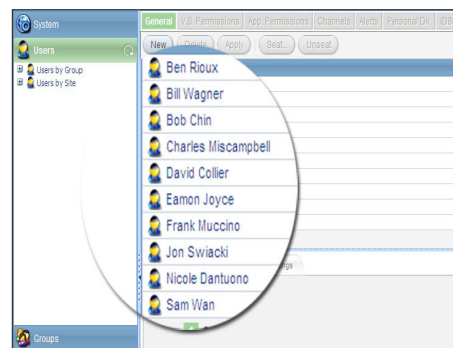
## Client Workstation Minimum Requirements

- IE 6.0 or higher & Mozilla 2.0 or higher
- Intel Pentium Processor
- 256MB RAM
- Microsoft® Windows 2003/ XP Professional
- Minimum Disk 120 GB
- SVGA 1024 x 768 display

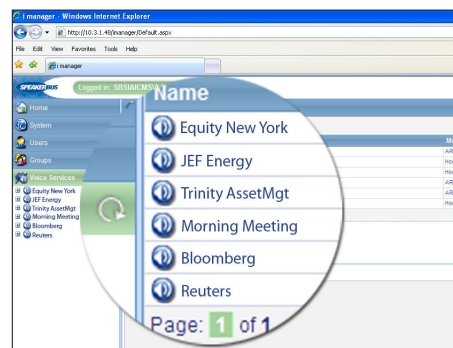
1. *i* series firmware version 2.2 or above is required on *i* series devices to be managed.
2. Speakerbus can pre-configure the hardware allowing customers to choose from preferred hardware vendors leveraging buying policies and corporate licensing discounts
3. The browser interface has been developed using Internet Information Server (IIS 6) and will be compatible with Microsoft® Windows Server 2003/2008 Server environments



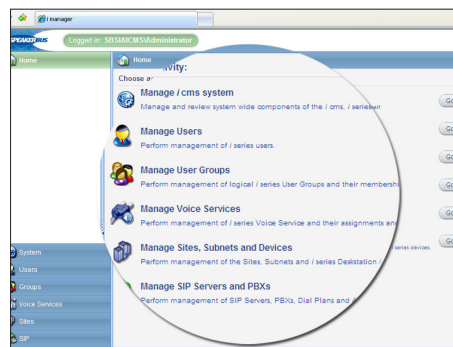
Adding a user to system



Viewing all users on system



Voice services available



Main menu options